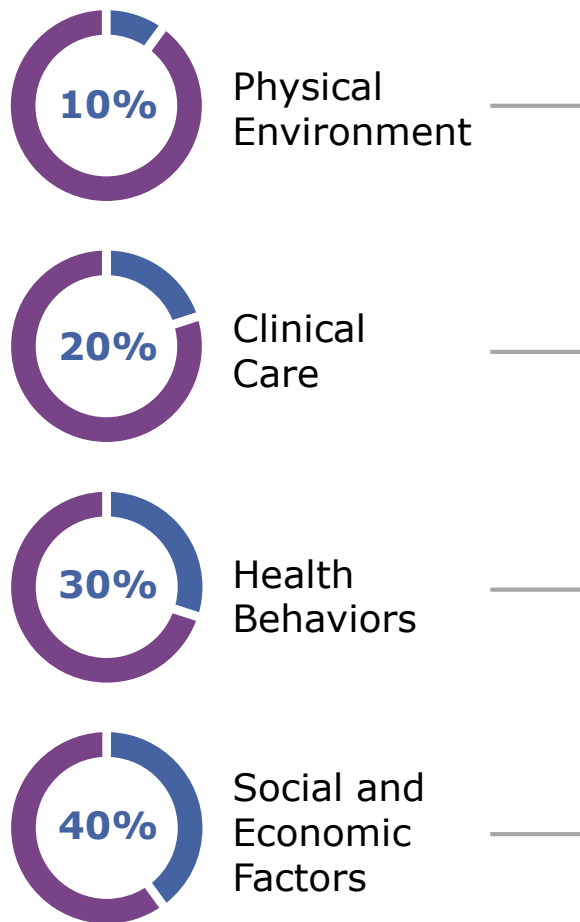




BHI's Healthcare Barrier Index Capabilities

BHI's Risk Identification and Stratification Approach Emphasizes Social Determinants of Health (SDOH)

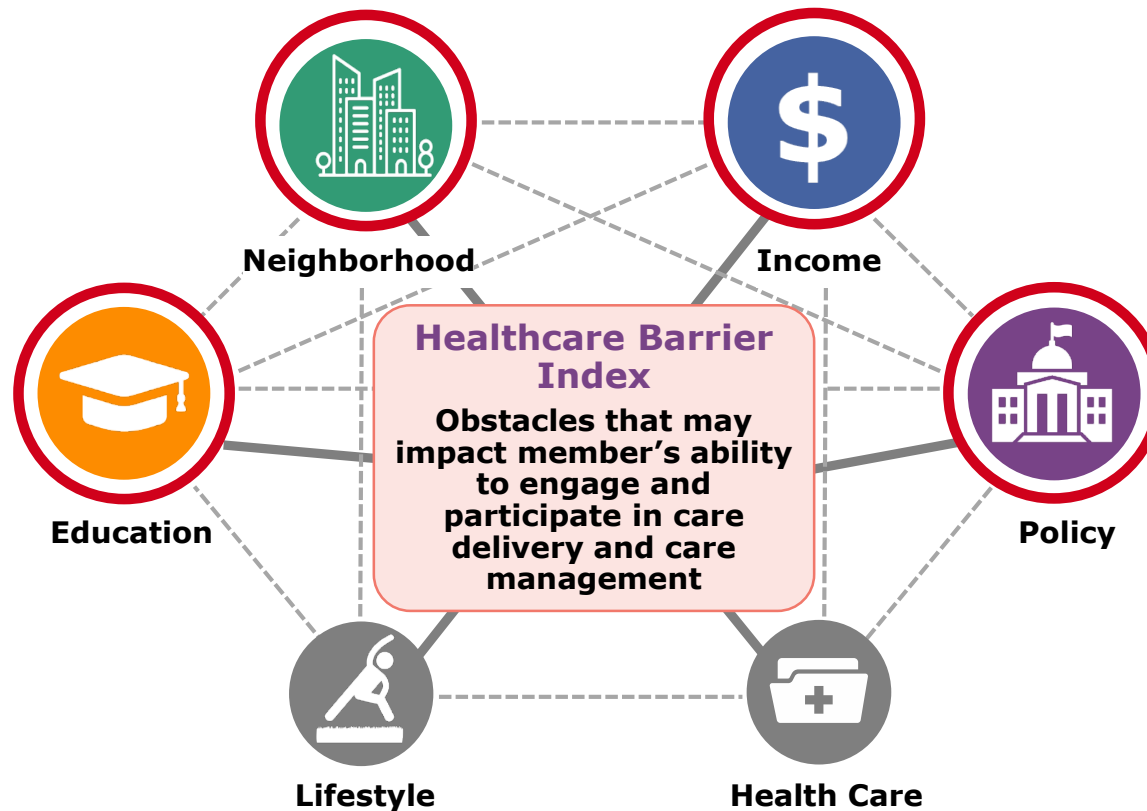


- An understanding of clinical, socioeconomic and behavior factors enables a more complete view of an individual's health status
- BHI assembles a broad range of socioeconomic and behavioral factors including income, education, lack of vehicle access, social/family support, disabilities, alcohol and substance abuse, behavioral health, and more
- These factors are used in BHI's predictive models and used to compute a **Healthcare Barrier Index** for each individual and/or populations
- Our HBI identifies members with low to high incidence of socioeconomic and behavioral factors that likely impact the member's ability to manage his/her health and help inform the most appropriate interventions for the member

Source: Robert Wood Johnson Foundation.

BHI Leverages SDOH Drivers Data to Understand Vulnerabilities

Public data sources used to impute factors based on ZIP codes



Claims/Enrollment information used to derive member specific factors:

- ICD-10 "Z" codes specifically address socioeconomic issues
- Disabilities and major physical issues
- Alcohol/substance abuse/behavioral health
- Family composition and disabilities

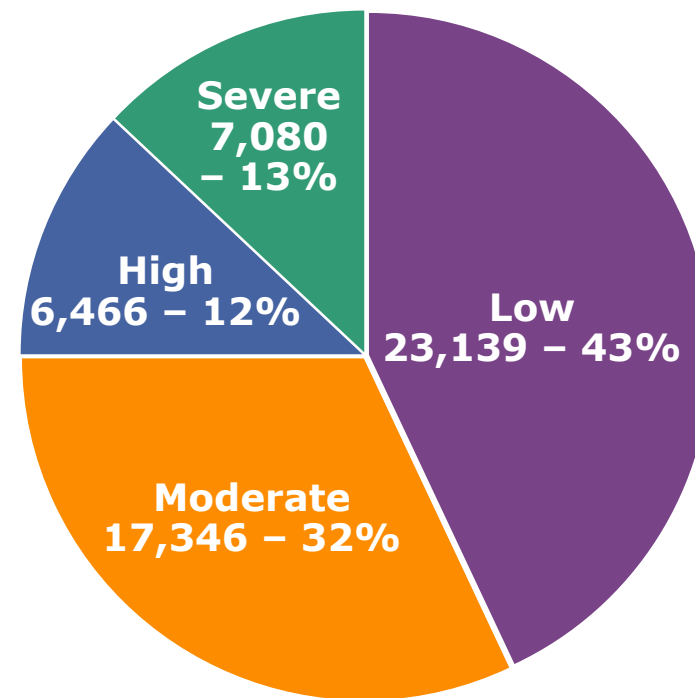
Ability to integrate plan submitted variables

Nine Factors Drive the Most Actionable Understanding of Healthcare Barriers

Key Health Care Barriers


- Access (4)
- Competing Priorities (2)
- Culture (1)
- Emotional Behaviors (2)
- Environment (3)
- Finance (4)
- Health Behavior (3)
- Skills/Ability (3)
- Social Support (1)

>50% of High Cost Individuals Wrestle with Intense SDOH Issues

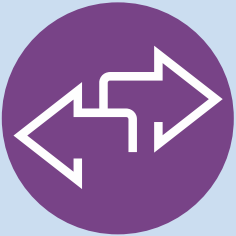



Source: Based on analysis of a national sample of members greater than \$250K using BHI National Data.

A Deeper Dive: Factors Embedded in BHI's Healthcare Barrier Index (1/2)

Determinant Domain	Factor	Description	Source	Factor Type
	Access to PCP	Flagged as a barrier if distance between PCP and member's ZIP code is greater than 25 miles	Medical Claims	Zip Code Level
	Medically Underserved Area	Ratio of PCP to population	US Census/CMS/AMA	
	Member's Food Access	Food access thresholds: Urban: 1 mile Rural: 10 miles	USDA Food Access	
	No Vehicle	Percentage of households with no available vehicle estimate, 2010-2014 ACS	US Census	

A Deeper Dive: Factors Embedded in BHI's Healthcare Barrier Index (2/2)

Determinant Domain	Factor	Description	Source	Factor Type
	Family Composition – Number of Dependents	Number of dependents with same Subscriber ID	Member Enrollment	Member Level
	"Z" Codes (Z636)	"Z" Codes – # dependents	Medical Claims	
	Behavioral Health	Based on claims for members with BH diagnosis in current and prior year	Medical Claims	
	"Z" Codes (Z561-Z566, Z5681, Z5682, Z592, Z600, Z62810, Z62811, Z62812, Z62819, Z62820, Z62521, Z62822, Z62890, Z630, Z631, Z638, Z640, Z644, Z730, Z731, Z733, Z7389, Z739)	"Z" Codes defining BH disorder	Medical Claims	



Follow Us



@BHI_USA



@BlueHealthIntelligence



@blue-health-intelligence



BlueHealthIntelligence.com

The images and icons in this document have been licensed by Blue Health Intelligence and the rights granted are non-transferable.

Except as stated herein, none of the Materials or any part of this Document, including logos, graphics, charts, data, sounds, images, layout, or design may be copied, reproduced, distributed, republished, downloaded, displayed, posted or transmitted in any form or by any means, including, but not limited to electronic, mechanical, photocopying, recording, or otherwise, without the prior express written permission of Blue Health Intelligence.

Unless stated, you acknowledge sole responsibility for obtaining any such licenses and/or permissions needed.

Unless otherwise stated, all data displayed in this presentation is for illustrative purposes only.

©2019. Blue Health Intelligence, an Independent Licensee of the Blue Cross and Blue Shield Association. All rights reserved.
Proprietary and Confidential. Blue Health Intelligence (BHI) is a trade name of Health Intelligence Company, LLC