

## VALUE-BASED CARE READINESS NAVIGATOR

Shift from uncertainty to confidence with intelligent measurement data



With 48 U.S. states and territories in various stages of implementing value-based care (VBC) initiatives, providers need in-depth, transparent, and multi-dimensional information to better understand cost and quality dynamics. Blue Health Intelligence's® (BHI®) Value-Based Care Readiness Navigator (VBCRN) combines big data with advanced benchmarking and relevant indices to reveal improvement opportunities at the system, facility, provider, episode, event, and intervention levels.

### BHI'S DIFFERENTIATED VALUE EQUATION:

**Deep Data + Advanced Analytics = Transformative Business Insights**

#### Understand performance variances

Most providers lack access to timely reimbursement and performance data that their VBC partners enjoy, finding themselves at a disadvantage when trying to optimize value-based care arrangements. With access to the nation's largest longitudinal claims database,\* which fuels advanced analytics, BHI's VBCRN helps healthcare leaders identify opportunities to maximize reimbursement through improved efficiency and quality. Providers can study performance at any dimension or care scenario to find the greatest improvement opportunities.

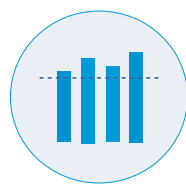
**At BHI, there are no black boxes; our clients understand exactly how we use data to uncover insights and recommend actions.**

VBCRN combines three analytic components that are key to evaluating performance in VBC arrangements:



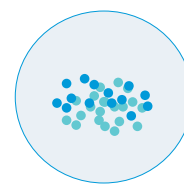
#### Local/National/Custom Benchmarks

Measures the relative performance of healthcare facilities, individual physicians, and group practices



#### Cost and Efficiency Indices

Case/mix and severity-adjusted efficiency scores compare performance at different levels.



#### Combined Quality Index

Blends results of readmission and complication indices to fully evaluate and measure care quality

### \* THE POWER OF BHI DATA

**200M+** UNIQUE MEMBERS AND GROWING  
REFRESHED MONTHLY

**20B** CLAIMS AND CLIMBING  
COVERAGE FOR EVERY 3-DIGIT ZIP CODE IN THE U.S.

**10+** YEARS OF HISTORIC DATA  
CONFORMED UNIFORMLY

## Tracking variances in care

BHI's VBCRN enables stakeholders to examine performance metrics from the system or facility level down to individual episodes and procedures to identify the greatest opportunities for improvement.



**HEALTH SYSTEM:** Hospital 1 has a 25% variance in efficiency relative to the market. Its cost/efficiency index shows the highest improvement opportunity.



**SERVICE LINE:** Comparison of service line indices against national indices shows **orthopedics** has the most notable variance.



**EPISODE:** Knee replacements have the greatest variance in orthopedics from low efficiency and quality index scores.

The BHI Episode of Care (EoC) Grouper allows for greater analytic and clinical flexibility by bundling care for thousands of conditions and complex treatments into a single unit of analysis.



**EPISODE WINDOW (PRE/INTRA/POST):** Efficiency analytics reveal that the pre-episode window is driving the greatest variance.

Within each episode, "actual to expected" variance is identified at the event and intervention levels allowing users to calculate potential cost savings.



**EVENT:** Office visit events in the pre-episode window account for the majority of the variance.



**INTERVENTION:** Radiology utilization is higher than expected, driving the efficiency variance for this episode type.

## ARE YOU USING ANALYTICS TO ADDRESS YOUR VOLUME-TO-VALUE TRANSFORMATION CHALLENGES?

Contact BHI to see how better data can make a difference.  
Visit [bluehealthintelligence.com](http://bluehealthintelligence.com) or email [info@bluehealthintelligence.com](mailto:info@bluehealthintelligence.com).