

## NATIONAL BENCHMARKING

Meaningful national account analytics for key stakeholders



**bhi**  
Blue Health Intelligence®

**hic**  
Health Intelligence Company

As more employers take an “activist” role in curbing rising healthcare costs, the industry needs access to increasingly sophisticated, data-driven insights around members’ healthcare benefits utilization.<sup>†</sup> Blue Health Intelligence® (BHI®) developed a National Benchmarking Module to allow users to conduct robust, apples-to-apples comparisons of accounts’ performance at national, regional, and industry levels.

**BHI’S DIFFERENTIATED VALUE EQUATION:  
Deep National Data + Transparent Comparisons + Powerful Analytics =  
MEANINGFUL Account-Level Insights**

### Multistate Accounts Need Benchmarks Without Boundaries

Powered by the BHI Data Repository (BDR)\* – the nation’s largest database of current, conformed, and continuous healthcare claims – our National Benchmarking Module offers HIPAA-compliant benchmarking using industry and geographic comparisons.

Access to this national data allows users to view more realistic and appropriate norms for employees and beneficiaries across the United States. Users can also better reflect variances and trends in cost and quality measures, where outcomes vary by different geographies. By applying a combination of national, regional, MSA, and Standard Industry Classification-level lenses, users can:



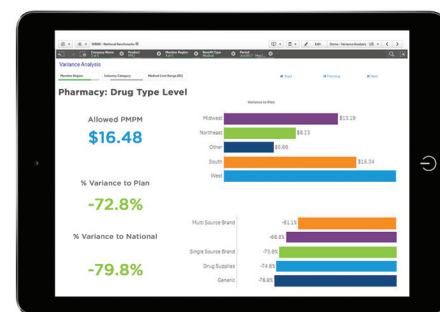
#### COMPARE EMPLOYER ACCOUNTS

- Eliminate data gaps to accurately compare key metrics against account, plan, and national statistics
- Spot outliers, track variances, and optimize benefit structures across settings and service areas
- Make risk-adjusted comparisons across a wide variety of dimensions



#### DRILL INTO COST AND UTILIZATION DATA

- Examine risk-adjusted benchmark differences using data that is refreshed quarterly
- Dig into multiple variables, including inpatient, outpatient, professional settings, and specific procedures
- Find root causes for differences in utilization and other key healthcare cost and quality drivers



Find root causes with national, regional, and industry-level comparisons.

<sup>†</sup>“With an expected 6% rise in health costs, 2020 may be year of ‘activist’ employer,” FierceHealthcare, June 2019

### \* THE POWER OF BHI DATA

**200M+** UNIQUE MEMBERS AND GROWING  
REFRESHED MONTHLY

**20B** CLAIMS AND CLIMBING  
COVERAGE FOR EVERY 5-DIGIT ZIP CODE IN THE U.S.

**10+** YEARS OF HISTORIC DATA  
CONFORMED UNIFORMLY

# COMPREHENSIVE BENCHMARKS FOSTER CONSULTATIVE RELATIONSHIPS



BHI's state-of-the-art analytics, data granularity, and objectivity give stakeholders the strategic intelligence to make meaningful, credible recommendations to their clients. Our massive datasets allow users to narrow their focus – to specific procedures, if needed – and identify cost drivers at the geographic level, by industry segment, or by type of service site.

Using our national benchmarking solution, stakeholders can:



## EXPLORE COMPARABLE POPULATION FACTORS GIVEN DIFFERENCES IN:

- Demographics
- Geographies
- Industries
- Health insurance products (e.g., PPO, HMO)
- Account size



## PROBE DIFFERENCES IN ADJUSTED BENCHMARKS BASED ON:

- Total cost of care
- Unit costs
- High-cost claimant status
- Average length of stay
- Prescription drug usage



## DIG INTO CLINICAL AND QUALITY DIFFERENCES BASED ON:

- Clinical episode components
- Health risk scores
- Industry standard quality measures



“BHI’s national benchmarking solution gives us the confidence and accuracy we need to “peel the onion” and deliver impactful insights and recommendations to accounts with a multistate footprint. The enterprise-level visibility and resulting insights have strengthened our relationships with large clients.”

CLIENT ANALYTICS DIRECTOR,  
REGIONAL HEALTH PLAN

## ARE YOU USING NATIONAL BENCHMARKS TO INFORM YOUR CUSTOMERS’ DECISION-MAKING?

Contact BHI to learn how you can leverage national benchmarks to deliver impactful insights. Visit [bluehealthintelligence.com](http://bluehealthintelligence.com) or email [info@bluehealthintelligence.com](mailto:info@bluehealthintelligence.com).